



Cirque

COLLECTION

SAMUEL & SONS

SAMUEL & SONS



Cirque is a delightful collection of multi-tonal pom pom fringes, embroidered, appliquéd and hand-printed silk borders.

Expanding upon the selection of pom pom fringes in our Dolce collection, Cirque introduces twenty new multicolor tonal combinations. From the whimsical mixture of bright orange and magenta in Confetti to the fresh greens and aqua in Dragonfly, the Cirque pom pom fringes will enhance children's rooms of all ages around the globe.

From left to right: Jumbo Pom Pom Fringe in Vapor, Cirque Pom Pom Fringe in Silver Birch, Confetti and Morning Glory



Cirque Pom Pom Fringe in Morning Glory, Skylar Border in Lapis and Jumbo Pom Pom Fringe in Vapor



The softer side of this story can be seen in the nursery colors of Chalk, Petal and Bluette. The collection's pom pom fringes are complemented by a series of borders utilizing advanced constructions: appliqué and laser-cut felt, hand-printed silk, and embroidery on linen.

Talia Border is a collage of laser-cut, appliqué circles, and offers luxurious dimensions with a soft hand. Available in Ivory and a heathered Fog.

A **1" Sloane Velvet Épinglé Border**, offered in soft shades of pinks, blues, ivory, green and grey, completes this collection.



From left to right: Sloane Velvet Border and Talia Appliqué Border in Fog, Cirque Pom Pom Fringe in Petal, Aubree Lace Border in Alabaster

*Light-hearted yet sophisticated in color combinations and constructions, **Cirque** is a collection suitable in a multitude of applications in an aesthetic for all ages.*



Shown from top to bottom:
Cirque Pom Pom Fringe in Petal, Sloane Velvet Border in Alabaster and Brielle Embroidered Border in Peony



“Cirque’s painterly approach to color is portrayed through hand embroidery, hand-tied pom poms and hand-block printing.”

Elise Border is an ivory linen border with embroidered garlands using satin stitches and hand-tied French knots.

Brielle Border takes a pointillist approach in its patterning which subtly transitions from one color to the next and is rendered through embroidery.

Aubree Border uses a fine linen lace construction to depict its transitional serpentine pattern.

Shown from left to right: Brielle Embroidered Border in Pebble, Talia Appliqué Border in Alabaster, Jumbo Pom Pom Fringe in Piña Colada and Elise Embroidered Border in Alabaster



Aubree Lace Border in Pearl

The 3" impressionist **Skylar Border** and 2" brush stroke **Celeste Border** both employ multi-screen, hand-printing on silk satin.

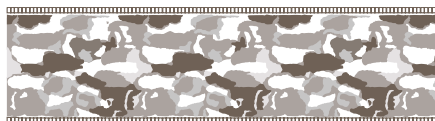
Cirque Collection



BT-58055 1" (25mm)

1" Sloane Velvet Border

Available in: *Alabaster, Blush, Blossom, Fog, Water, Lemongrass*



BT-58057 2" (50mm)

Celeste Border

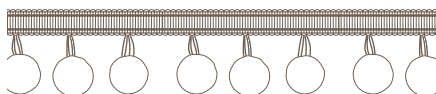
Available in: *Bisque, Pink Opal, Marine*



BT-58052 2.83" (72mm)

Aubree Lace Border

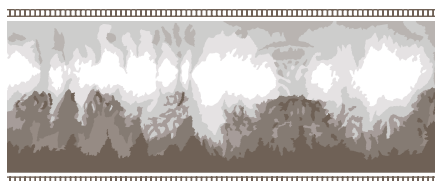
Available in: *Alabaster, Petal, Pearl*



TF-58059 1.5" (38mm)

Cirque Pom Pom Fringe

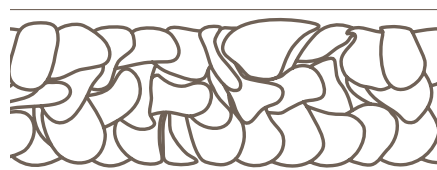
Available in: *Morning Glory, Meadow, Zebra, Pear, Nautical, Coral, Fiesta, Azalea, Cherry, Bluetie, Celestial, Damask, Petal, Sorbet, Dragonfly, Chalk, Confetti, Silver Birch, Pumice, Peacock*



BT-58056 3" (76mm)

Skylar Border

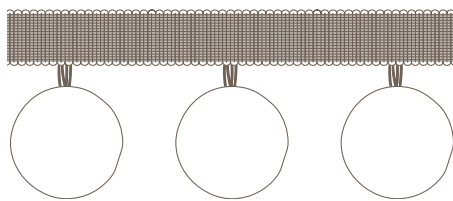
Available in: *Fog, Lapis*



BT-58060 3" (76mm)

Talia Appliqué Border

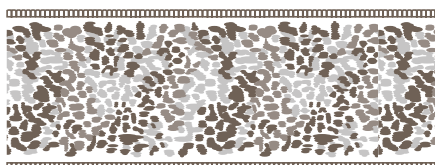
Available in: *Alabaster, Fog*



985-56313 3.25" (83mm)

Jumbo Pom Pom Fringe

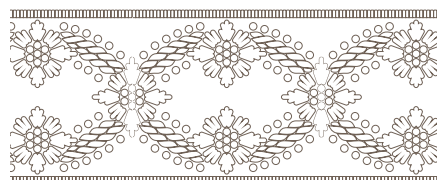
Available in: *Piña Colada, Vapor, Blueberry Pie, Whipped Cream*



BT-58046 2" (51mm)

Brielle Embroidered Border

Available in: *Peony, Sand, Pebble, Morning Glory, Lapis, Meadow*



BT-58053 3" (76mm)

Elise Embroidered Border

Available in: *Alabaster*